

Freezer 11 LP

Intel CPU Top-Blow Cooler



Freezer 7 Pro (Rev. 2)

Compact Multi-Compatible CPU Tower Cooler



Freezer A11

Compact AMD CPU Tower Cooler



Freezer i11 CO

Compact Intel CPU Tower Cooler for Continuous Operation



Freezer i11

Compact Intel CPU Tower Cooler



Freezer A32

Semi Passive AMD CPU Tower Cooler



Freezer i32

Semi Passive Intel CPU Tower Cooler



Freezer i32 Plus

Semi Passive Intel CPU Tower Cooler with Push-Pull-Configuration



Freezer 13

Multi-Compatible CPU Tower Cooler



Freezer 13 Limited Edition

Semi Passive CPU Tower Cooler



Freezer 13 CO

Multi-Compatible CPU Tower Cooler for Continuous Operation



Freezer i32 CO

Semi Passive Intel CPU Tower Cooler for Continuous Operation



Freezer Xtreme (Rev. 2)

Multi-Compatible CPU Twin Tower Cooler



Liquid Freezer 120

Multi-Compatible All-in-One CPU Water Cooler



Liquid Freezer 240

Multi-Compatible All-in-One CPU Water Cooler



Liquid Freezer 360

Multi-Compatible All-in-One CPU Water Cooler



Alpine M1

AM1 CPU Cooler



Alpine 11 GT

Cost-Optimised Intel CPU Cooler



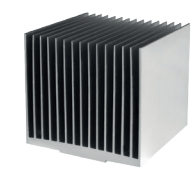
Alpine 64 GT

Cost-Optimised AMD CPU Cooler



Alpine M1-Passive

Silent AM1 CPU Cooler



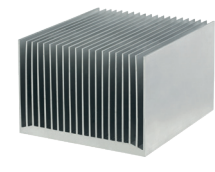
Alpine 11

Standard Intel CPU Cooler



Alpine 11 Passive

Silent Intel CPU Cooler



Alpine 64 Pro

AMD CPU Cooler with Vibration Absorption



Alpine 11 Plus

Optimised Intel CPU Cooler



Alpine 64 Plus

Optimised AMD CPU Cooler



Alpine 11 Pro

Intel CPU Cooler with Vibration Absorption



Alpine 20 Plus CO

Intel CPU Cooler for Servers



	Fluid Dynamic Bearing	Dual Ball Bearing	Passive	Semi Passive	Water Cooling
	<p>The Fluid Dynamic Bearing comes with an oil capsule that avoids lubricant leakage. Thus this bearing is as quiet as a sleeve bearing but comes with a significantly higher service life.</p>	<p>The premium quality Japanese dual ball bearing allows continuous operation 24/7 without the slightest compromise in performance. The life span is up to 5 times longer compared to models using a generic bearing.</p>	<p>The cooling performance can keep every AM1 CPU at bay by margin and cools efficiently even the most power hungry AM1 APU completely passive. It is maintenance free and does not collect dust, offering an affordable solution to make a PC absolutely silent.</p>	<p>The ARCTIC F12 fan is well known for high airflow at a comfortable noise level and thus this cooler won't be disturbing even at maximum CPU load. The real improvement is the motor and controller. Our German engineers made this fan work at lower speed when performance is not needed.</p>	<p>Outstanding CPU cooling performance through water cooling solution with efficient water pump. Latest motor technology and smooth tubes offer top performance at only 2 watt power consumption. It is not just the most powerful cooling solution, but also the quietest.</p>
Freezer 11 LP	X				
Freezer i30	X				
Freezer 7 Pro (Rev. 2)	X				
Freezer A11	X				
Freezer i11 CO		X			
Freezer i11	X				
Freezer A32	X			X	
Freezer i32	X			X	
Freezer i32 Plus	X			X	
Freezer 13	X				
Freezer 13 Limited Edition	X				
Freezer 13 CO		X			
Freezer i32 CO		X		X	
Freezer Xtreme (Rev. 2)	X				
Liquid Freezer 120	X				X
Liquid Freezer 240	X				X
Liquid Freezer 360	X				X
Alpine M1	X				
Alpine 11 GT	X				
Alpine 64 GT	X				
Alpine M1-Passive			X		
Alpine 11	X				
Alpine 11 Passive			X		
Alpine 64 Pro	X				
Alpine 11 Plus	X				
Alpine 64 Plus	X				
Alpine 11 Pro	X				
Alpine 20 Plus CO		X			

Product	Bearing	Technology	Construction	AMD Socket	Intel Socket	Fan	Max Cooling Perf.	Rec. TDP up to	Fan speed	Noise	Thermal Compound	Warranty
Freezer 11 LP	Fluid Dynamic Bearing	Air Cooling	Top Blow		Intel 1150, 1151, 1155, 1156, 775	92 mm	100 W	95 W	900-2000 RPM	0.3 Sone	MX-2	6 years
Freezer i30	Fluid Dynamic Bearing	Air Cooling	Tower		Intel 2011(-3), 1150, 1151, 1155, 1156	120 mm	320 W	160 W	400-1350 RPM	0.3 Sone	MX-4	6 years
Freezer 7 Pro (Rev. 2)	Fluid Dynamic Bearing	Air Cooling	Tower	AMD FM2(+), FM1, AM3(+), AM2(+), 939, 754, AM4	Intel 1366, 1150, 1151, 1155, 1156, 775	92 mm	150 W	115 W	900-2200 RPM	0.5 Sone	MX-2	6 years
Freezer A11	Fluid Dynamic Bearing	Air Cooling	Tower	AMD FM2, FM1, AM3(+), AM2(+)		92 mm	150 W	130 W	500-2000 RPM	0.3 Sone	MX-4	6 years
Freezer i11 CO	Dual Ball Bearing	Air Cooling	Tower		Intel 2011(-3), 1150, 1151, 1155, 1156	92 mm	150 W	130 W	500-2000 RPM	0.3 Sone	MX-4	6 years
Freezer i11	Fluid Dynamic Bearing	Air Cooling	Tower		Intel 2011(-3), 1150, 1151, 1155, 1156	92 mm	150 W	130 W	500-2000 RPM	0.3 Sone	MX-4	6 years
Freezer A32	Fluid Dynamic Bearing	Semi Passive Cooling	Tower	AMD FM2(+), FM1, AM3(+), AM2(+)		120 mm	320 W	150 W	0-1350 RPM	0.3 Sone	MX-4	6 years
Freezer i32	Fluid Dynamic Bearing	Semi Passive Cooling	Tower		Intel 2011(-3), 1150, 1151, 1155, 1156	120 mm	320 W	150 W	0-1350 RPM	0.3 Sone	MX-4	6 years
Freezer i32 Plus	Fluid Dynamic Bearing	Semi Passive Cooling	Tower		2011(-3), 1150, 1151, 1155, 1156	120 mm x 2	320 W	150 W	0-1350 RPM	0.3 Sone	MX-4	6 years
Freezer 13	Fluid Dynamic Bearing	Air Cooling	Tower	AMD FM2(+), FM1, AM3(+), AM2(+), 939, 754, AM4	Intel 1366, 1150, 1151, 1155, 1156, 775	92 mm	200 W	140 W	600-2000 RPM	0.5 Sone	MX-4	6 years
Freezer 13 Limited Edition	Fluid Dynamic Bearing	Air Cooling	Tower	AMD FM2(+), FM1, AM3(+), AM2(+), 939, 754, AM4	Intel 1366, 1150, 1151, 1155, 1156, 775	92 mm	200 W	140 W	600-2000 RPM	0.5 Sone	MX-4	6 years
Freezer 13 CO	Dual Ball Bearing	Air Cooling	Tower	AMD FM2(+), FM1, AM3(+), AM2(+), 939, 754, AM4	Intel 1366, 1150, 1151, 1155, 1156, 775	92 mm	200 W	140 W	600-2000 RPM	0.5 Sone	MX-4	6 years
Freezer i32 CO	Dual Ball Bearing	Semi Passive Cooling	Tower		Intel 2011(-3), 1150, 1151, 1155, 1156	120 mm	320 W	150 W	0-1350 RPM	0.3 Sone	MX-4	6 years
Freezer Xtreme (Rev. 2)	Fluid Dynamic Bearing	Air Cooling	Twin Tower	AMD FM2(+), FM1, AM3(+), AM2(+), 939, 754, AM4	Intel 1366, 1150, 1151, 1155, 1156, 775	120 mm	160 W	150 W	800-1500 RPM	0.5 Sone	MX-2	6 years
Liquid Freezer 120	Fluid Dynamic Bearing	Water Cooling	Radiator	AMD AM2(+), AM3(+), FM1, FM2(+)	Intel 2011(-3), 1150, 1151, 1155, 1156	120 mm x 2	250 W	250 W	500-1350 RPM	0.3 Sone	MX-4	2 years
Liquid Freezer 240	Fluid Dynamic Bearing	Water Cooling	Radiator	AMD AM2(+), AM3(+), FM1, FM2(+)	Intel 2011(-3), 1150, 1151, 1155, 1156	120 mm x 4	350 W	350 W	500-1350 RPM	0.3 Sone	MX-4	2 years
Liquid Freezer 360	Fluid Dynamic Bearing	Water Cooling	Radiator	AM2(+), AM3(+), FM1, FM2(+)	Intel 2011(-3), 1150, 1151, 1155, 1156	120 mm x 6	300 W	300 W	500-1350 RPM	0.3 Sone	MX-4	2 years

PLEASE NOTE

Intel's latest generation of processors Kaby Lake is using the socket 1151. Therefore Kaby Lake is compatible with almost all of ARCTIC's CPU coolers (please see detailed compatibility in the column "Intel socket").

Product	Bearing	Technology	Construction	AMD Socket	Intel Socket	Fan	Max Cooling Perf.	Rec. TDP up to	Fan speed	Noise	Thermal Compound	Warranty
Alpine M1	Fluid Dynamic Bearing	Air Cooling	Heatsink	AMD AM1		80 mm	50 W	45 W	750 RPM	0.1 Sone	MX-2	6 years
Alpine 11 GT	Fluid Dynamic Bearing	Air Cooling	Heatsink		Intel 1150, 1151, 1155, 1156, 775	80 mm	75 W	65 W	500-2000 RPM	0.3 Sone	MX-2	6 years
Alpine 64 GT	Fluid Dynamic Bearing	Air Cooling	Heatsink	AMD FM2(+), FM1, AM3(+), AM2(+), 939, 754, AM4		80 mm	70 W	65 W	500-2000 RPM	0.2 Sone	MX-2	6 years
Alpine M1-Passive	No Bearing	Passive Cooling	Heatsink	AMD AM1			35 W	35 W		0.0 Sone	MX-2	6 years
Alpine 11	Fluid Dynamic Bearing	Air Cooling	Heatsink		Intel 1150, 1151, 1155, 1156, 775	92 mm	95 W	85 W	900-2000 RPM	0.4 Sone	MX-2	6 years
Alpine 11 Passive	No Bearing	Passive Cooling	Heatsink		Intel 1150, 1151, 1155, 1156		35 W	47 W		0.0 Sone	MX-2	6 years
Alpine 64 Pro	Fluid Dynamic Bearing	Air Cooling	Heatsink	AMD FM2+, FM1, AM3(+), AM2(+), 939, AM4		92 mm	90 W	85 W	500-2000 RPM	0.4 Sone	MX-2	6 years
Alpine 11 Plus	Fluid Dynamic Bearing	Air Cooling	Heatsink		Intel 1150, 1151, 1155, 1156, 775	92 mm	100 W	90 W	500-2000 RPM	0.4 Sone	MX-2	6 years
Alpine 64 Plus	Fluid Dynamic Bearing	Air Cooling	Heatsink	AMD FM2+, FM1, AM3(+), AM2(+), 939, AM4		92 mm	100 W	90 W	600-2200 RPM	0.4 Sone	MX-2	6 years
Alpine 11 Pro	Fluid Dynamic Bearing	Air Cooling	Heatsink		Intel 1150, 1151, 1155, 1156, 775	92 mm	95 W	85 W	500-2000 RPM	0.4 Sone	MX-2	6 years
Alpine 20 Plus CO	Dual Ball Bearing	Air Cooling	Heatsink		Intel LGA2011	92 mm	130 W	95 W	600-2200 RPM	0.5 Sone	MX-4	6 years

PLEASE NOTE
Intel's latest generation of processors Kaby Lake is using the socket 1151. Therefore Kaby Lake is compatible with almost all of ARCTIC's CPU coolers (please see detailed compatibility in the column "Intel socket").